

Your Stow-Munroe Falls Public Library card gives you access to nearly 12 million items from more than 45 other participating CLEVNET libraries.



You can:

- Borrow materials, place holds, and have items delivered to any participating CLEVNET library.
- Return CLEVNET materials to any library in the consortium. Items will automatically be checked in at the returning library and sent back to the owning library.
- Check your library account, place holds, and renew material online through the "My Account" feature.
- Access research databases to explore topics such as car repair, genealogy, consumer information, and medical information.
- Connect to eMedia services to enjoy eBooks, audiobooks, music, comics, magazines, and videos from your device.

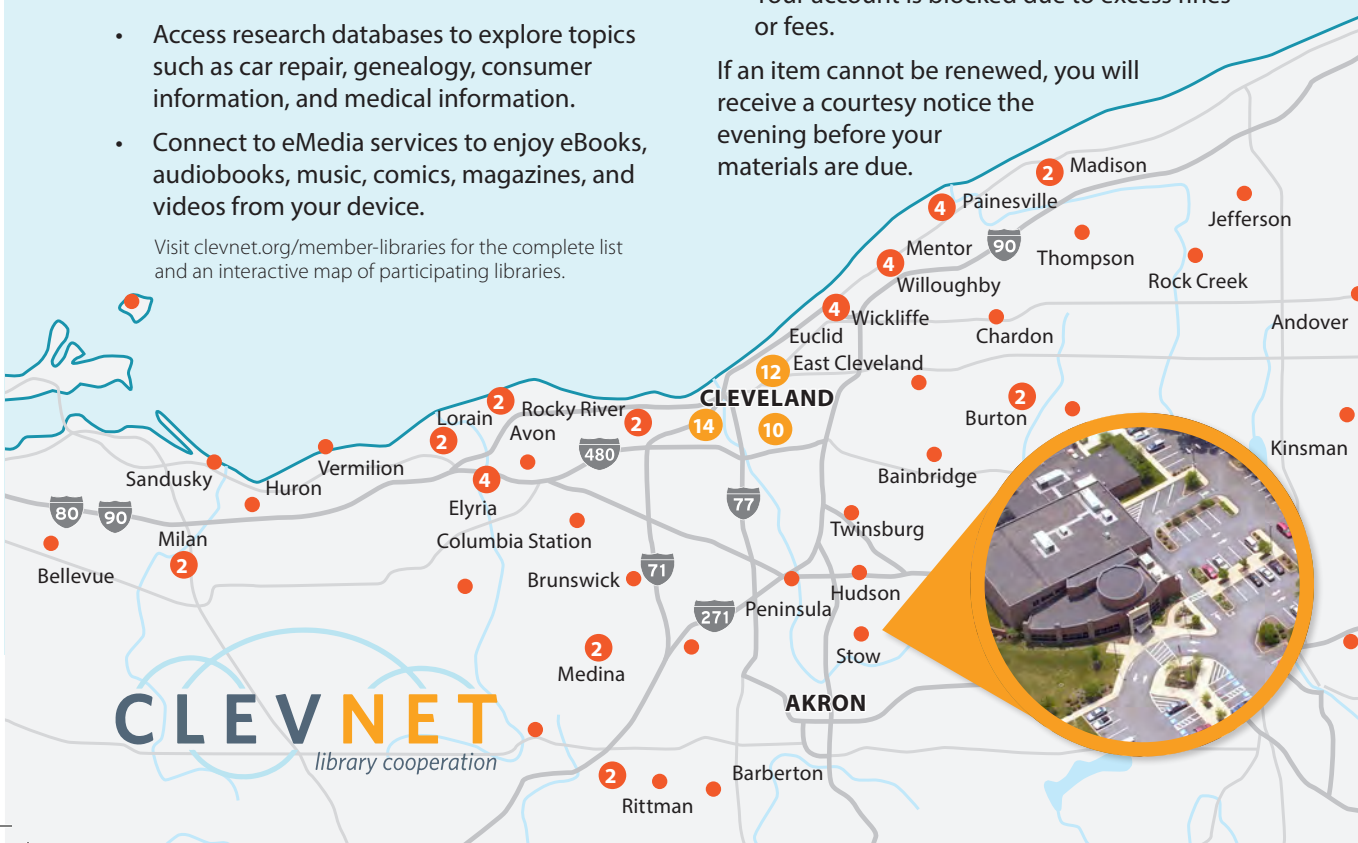
Visit clevnet.org/member-libraries for the complete list and an interactive map of participating libraries.

Automatic Renewals

The system will attempt to automatically renew physical materials one day before items are due. An item will NOT renew if:

- Someone else has placed a hold on the item.
- The item has reached its renewal limit. Stow-Munroe Falls Public Library items will renew a maximum of three times. Renewal limits for other CLEVNET items will vary by library system.
- Your account is blocked due to excess fines or fees.

If an item cannot be renewed, you will receive a courtesy notice the evening before your materials are due.



Streaming Media

Sign in and create an account using your library card number. Free apps for many of these services are available on the Google Play and Apple app stores for Android and iOS devices.

OverDrive

Browse eBooks and more in the CLEVNET digital collection.

clevnet.overdrive.com

hoopla

Check out movies, TV shows, music, eBooks, and audiobooks instantly, with no waiting list.

hoopladigital.com

kanopy

Stream award-winning documentaries, film festival favorites, indie and classic films.

smfpl.kanopy.com

freegal music

Download or stream FREE music.

smfpl.freegalmusic.com

Find even more services at www.smfpl.org

[LinkedIn Learning](#) [The New York Times](#)

[creativebug](#) [CUMULUS BOOK LIBRARY](#) [Flipster](#)



Stow • Munroe Falls
PublicLibrary

Read. Dream. Connect.

3512 Darrow Rd. • Stow, OH 44224
(330) 688-3295 • www.smfpl.org

7-27-2021



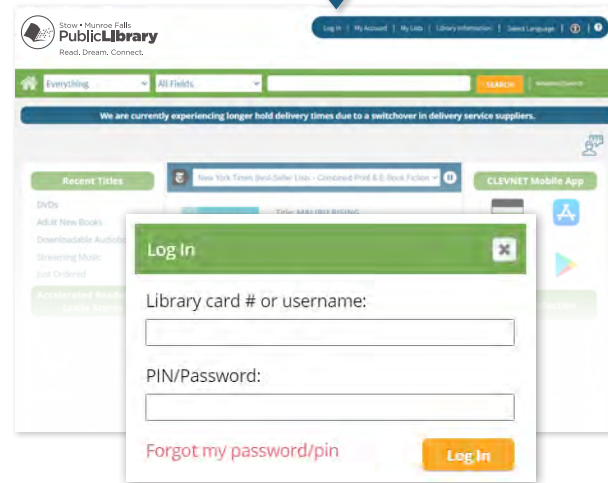
CATALOG AND APP
QUICKSTART GUIDE

The Online Catalog (using a web browser)


Log In | My Account | My Lists | Library Information | Select Language | ?

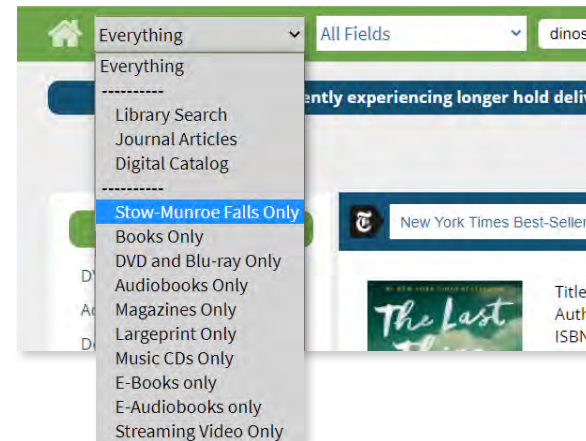
How to log in

1. Go to **www.smfpl.org** and click **"Catalog."**
2. Click **"Log In,"** located at the top of the webpage.
3. Type in your library card number – you can find it on the back of your card. Do not include dashes or spaces.
4. Type in your 4-digit PIN. In most cases, your PIN is the last four digits of the phone number in your library record.
5. Click the **"Log In"** button. You will now be able to view your library account information, which includes your personal information, checkouts, holds, and fines.



Searching the Catalog

1. Enter your title or keywords in the search bar near the top of the webpage.
2. The interface provides easy ways to narrow or expand your search, or browse for related items.
3.  Not sure what you're looking for? Click the **"Home"** icon to return to the catalog's front page and browse bestsellers and recently added titles.
4. When you find a title you'd like to put on hold or download, simply click **"Place Hold"** or **"Download"** and follow the prompts.



If you have further questions or need assistance logging in to your account, please visit the library or call us at (330) 688-3295 ext. 4. We're here to help!

The CLEVNET App

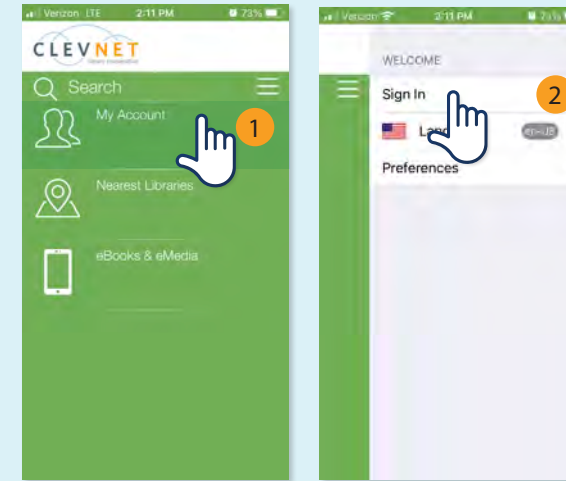
Available for Android and iOS

Download the FREE app for your Apple or Android devices.



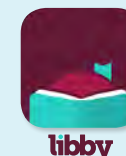
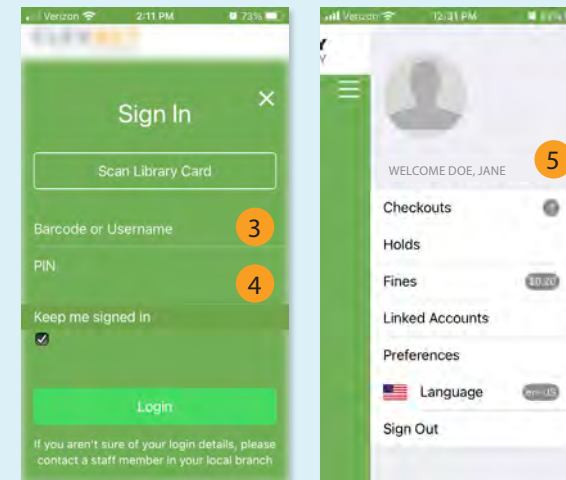
Logging in to the CLEVNET app

1. Click **"My Account"**
2. Click **"Sign In"**
3. Click **"Scan Library Card"** to scan the barcode on the back of your library card with your smartphone's camera, OR manually type in the number on the back of your card. Do not include dashes or spaces.
4. Type in your 4-digit PIN. In most cases, your PIN is the last four digits of the phone number in your library record.
5. Click **"Login."** You will now be able to view and manage your library account information.



What can I do in the CLEVNET app?

- Search the collection, easily narrow or expand your search, browse for related items, and place items on hold.
- Search for eBooks and download them from the catalog.
- Link accounts to manage account information for a family member.
- Find directions and contact information for the nearest CLEVNET library.
- Display a virtual library card for your primary account and linked accounts.



OverDrive and Libby apps

Library users may also use the OverDrive and Libby apps to access eBooks and audiobooks in the CLEVNET digital library. Sign in using your library card number and PIN.